

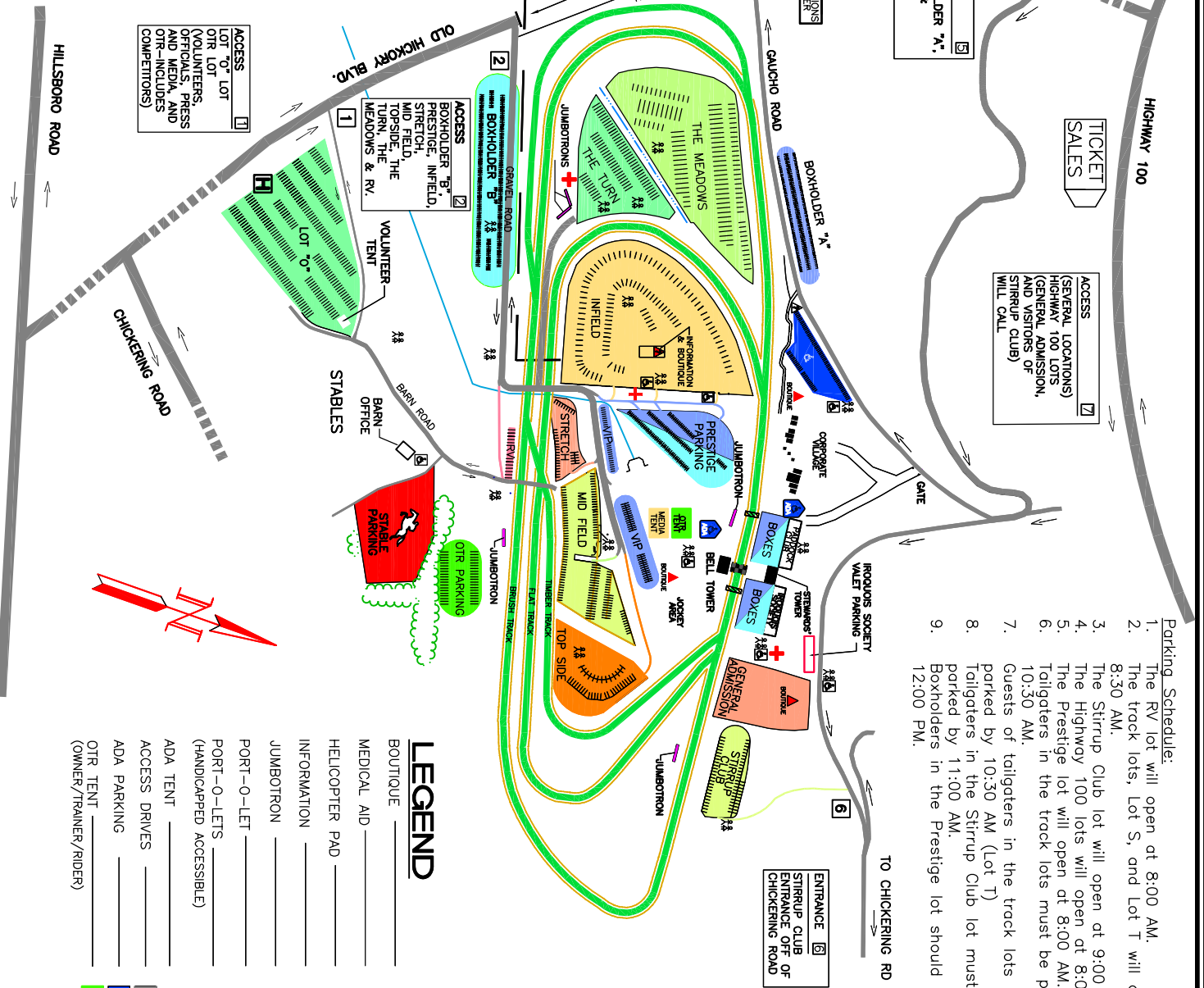
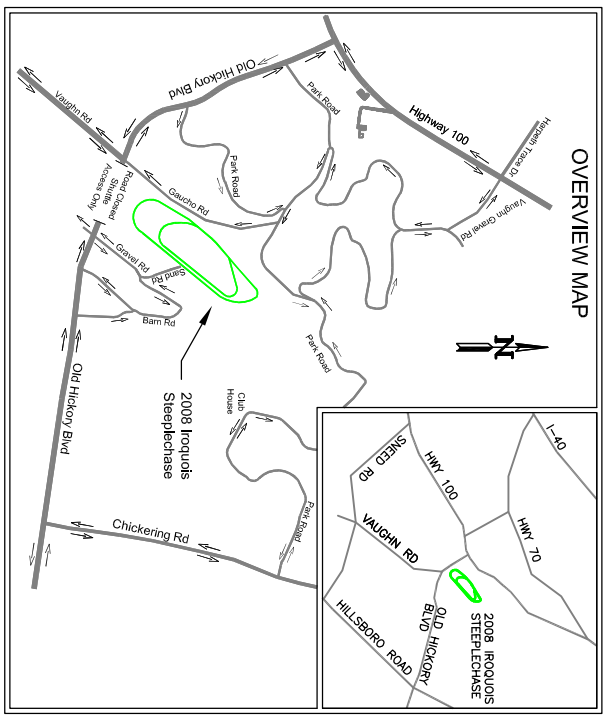
IROQUOIS STEEPLCHASE

PRESENTED BY BANK OF AMERICA

MAY 10, 2008

Map Compliments of

Crouch Engineering, P. C.



TICKET SALES

ACCESS (GENERAL LOCATIONS)
HIGHWAY 100 LOTS
(GENERAL ADMISSION,
AND VISITORS OF
STIRRUP CLUB)
WILL CALL

- Parking Schedule:**
1. The RV lot will open at 8:00 AM.
 2. The track lots, Lot S, and Lot T will open at 8:30 AM.
 3. The Stirrup Club lot will open at 9:00 AM.
 4. The Highway 100 lots will open at 8:00 AM.
 5. The Prestige lot will open at 8:00 AM.
 6. Tailgaters in the track lots must be parked by 10:30 AM.
 7. Guests of tailgaters in the track lots must be parked by 10:30 AM (Lot T)
 8. Tailgaters in the Stirrup Club lot must be parked by 11:00 AM.
 9. Boxholders in the Prestige lot should park by 12:00 PM.

- LEGEND**
- ▲ BOUTIQUE
 - ⊕ MEDICAL AID
 - ⊞ HELICOPTER PAD
 - ℵ INFORMATION
 - ⊞ JUMBOTRON
 - ⊞ PORT-O-LET
 - ⊞ PORT-O-LETS (HANDICAPPED ACCESSIBLE)
 - ⊞ ADA TENT
 - ⊞ ACCESS DRIVES
 - ⊞ ADA PARKING
 - ⊞ OTR TENT (OWNER/TRAINER/RIDER)

